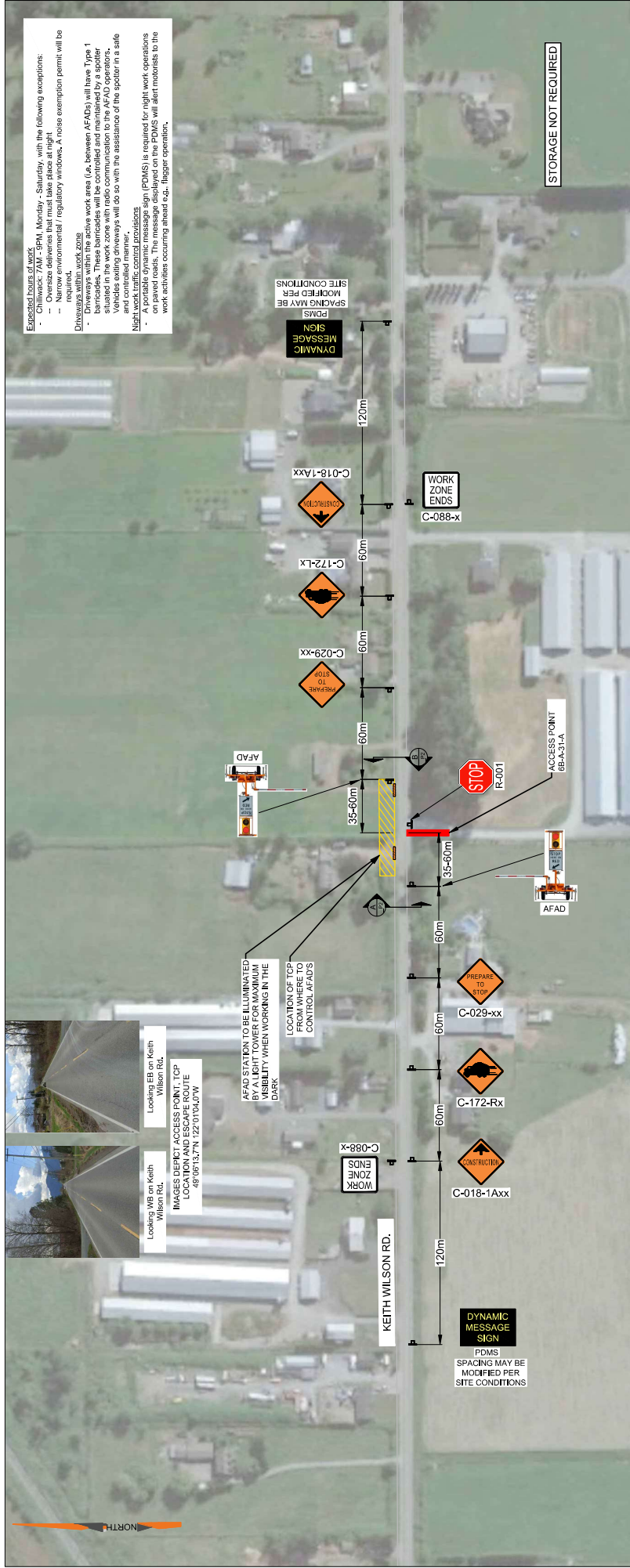




Looking WB on Keith Wilson Rd.
Looking EB on Keith Wilson Rd.
IMAGES DEPICT ACCESS POINT, TCP LOCATION AND ESCAPE ROUTE
49°09'15.7"N 122°07'04.0"W



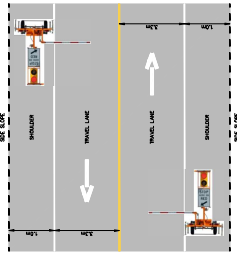
Expected hours of work

- **Chilliwack, 7AM - 9PM, Monday - Saturday**, with the following exceptions:
 - Oversize deliveries that must take place at night
 - Narrow environmental / regulatory windows. A noise exemption permit will be obtained for these activities.
- **Driveways within work zone**
 - Driveways within the active work area (i.e. between AFADs) will have Type 1 barricades. These barricades will be controlled and maintained by a spotter.
 - Driveways outside the active work area will have Type 2 barricades. These barricades will be controlled and maintained by the contractor and controlled manner.
 - Vehicles exiting driveways will do so with the assistance of the spotter in a safe and controlled manner.

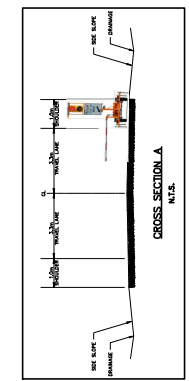
Night work traffic control provisions

- Night work traffic control provisions (CPMS) is required for night work operations on paved roads. The message displayed on the PDMS will alert motorists to the work activities occurring ahead e.g., flagger operation.

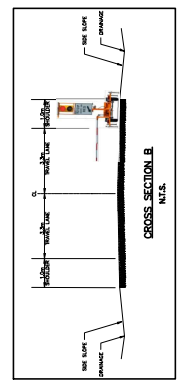
STORAGE NOT REQUIRED



NOTE: DIMENSIONS SHOWN ARE SITE SPECIFIC
PLAN VIEW
N.T.S.



NOTE: DIMENSIONS SHOWN ARE SITE SPECIFIC
CROSS SECTION A
N.T.S.



NOTE: DIMENSIONS SHOWN ARE SITE SPECIFIC
CROSS SECTION B
N.T.S.

LEGEND:

- 4 SIGN MARKER
- AUTOMATED FLAGGER ASSISTANCE DEVICE (AFAD)
- TCP CONTROL LOCATION
- ACCESS (6B-A-31-A)
- TYPE 1 BARRIER

SEAL:

PERMIT TO PRACTICE
WATT CONSULTING GROUP LTD
SIGNATURE _____
DATE _____
PERMIT NUMBER: 1001432
ENGINEERS & GEOSCIENTISTS
BRITISH COLUMBIA

REVISIONS	DATE	DESCRIPTION
0	JAN 13-23	ISSUED FOR IMPLEMENTATION
1	JAN 17-23	ISSUED FOR IMPLEMENTATION
2		
3		
4		
5		
6		
7		
8		

TRAFFIC CONTROL LAYOUT
AP 6B-A-31-A
BPLP TMEP SPREAD 6B

0 31.25m 62.5m 125m

DESIGNED: GP
DRAWN: GP
CHECKED: GP
APPROVED: KM

DESIGN SPEED: 60 km/h

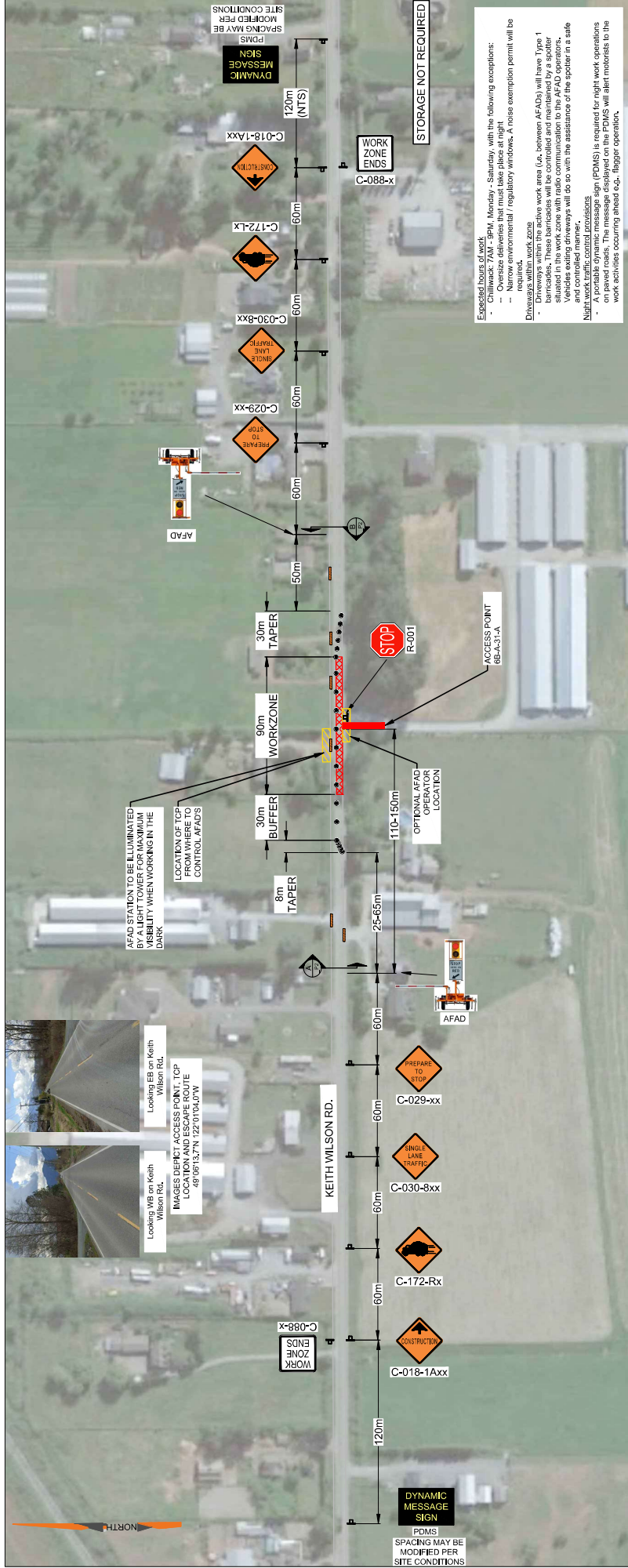
PROJECT NO: 3431.B01
DRAWING NO: 6B-A-31-A_P2

DATE: JAN 13, 2023
REVISION: 1

WATT Consulting Group
Calgary, Edmonton, Lloydminster,
Okanagan, Vancouver, Victoria
WATTCONSULTINGGROUP.COM



Looking WB on Keith Wilson Rd.
 Looking EB on Keith Wilson Rd.
 IMAGES DEPICT ACCESS POINT, TCP LOCATION AND ESCAPE ROUTE 49°06'15.7"N 122°07'04.0"W

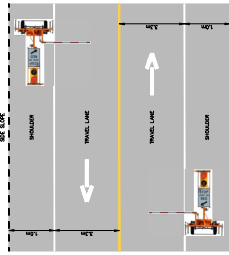


Expected hours of work

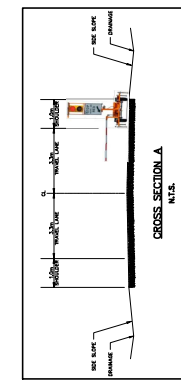
- Chilliwack: 7AM - 3PM, Monday - Saturday, with the following exceptions:
 - Oversize deliveries that must take place at night
 - Narrow environmental/ regulatory windows. A noise exemption permit will be required.
- Driveways within work zones
- Driveways within the active work area (i.e. between AFADs) will have Type 1 barricades. These barricades will be controlled and maintained by a spotter.
- Vehicles exiting driveways will do so with the assistance of the spotter in a safe and controlled manner.

Night work traffic control procedures (PDMS) is required for night work operations on paved roads. The message displayed on the PDMS will alert motorists to the work activities occurring ahead e.g., flagger operation.

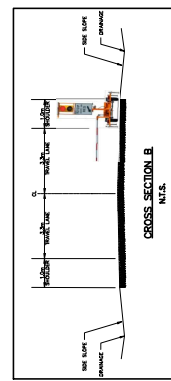
STORAGE NOT REQUIRED



NOTE: DIMENSIONS SHOWN ARE SITE SPECIFIC



NOTE: DIMENSIONS SHOWN ARE SITE SPECIFIC



NOTE: DIMENSIONS SHOWN ARE SITE SPECIFIC

- LEGEND:**
- SIGN MARKER
 - AUTOMATED FLAGGER ASSISTANCE DEVICE (AFAD)
 - TCP CONTROL LOCATION
 - ACCESS (6B-A-31-A)
 - WORK ZONE
 - DELINEATOR
 - TYPE 1 BARRICADE

TRAFFIC CONTROL LAYOUT
AP 6B-A-31-A-SLAT
BPLP TMEP SPREAD 6B

WATT Consulting Group
 Calgary, Edmonton, Lloydminster, Okanagan, Vancouver, Victoria
 WATTCONSULTINGGROUP.COM

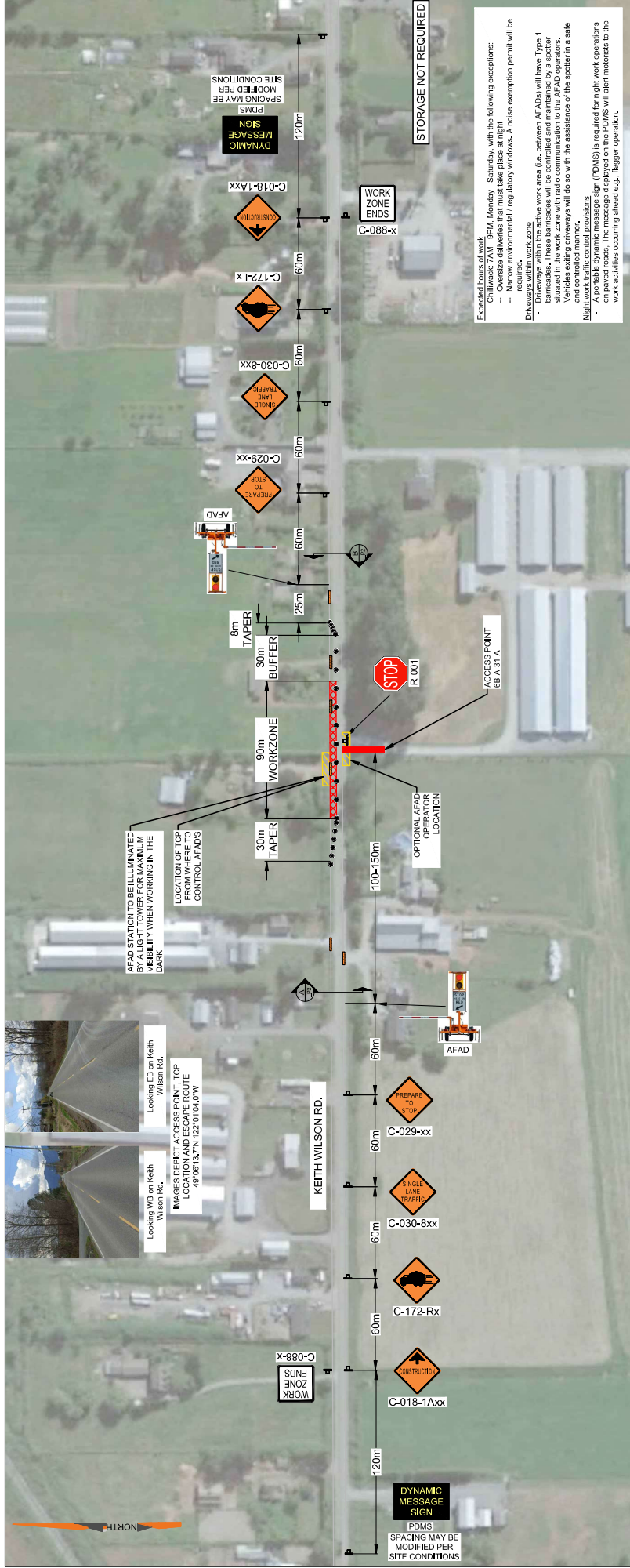
DESIGNED: GP	DRAWN: GP	CHECKED: KM	APPROVED: KM
DESIGN SPEED: 60 km/h	PROJECT NO: 3431.B01	DRAWING NO: 6B-A-31-A-SLAT_P2	REVISION: 1
DATE: JAN 17, 2023			

REVISIONS	ISSUED FOR IMPLEMENTATION	DATE
0	ISSUED FOR IMPLEMENTATION	JAN 17-23
1	ISSUED FOR IMPLEMENTATION	JAN 20-23
2		
3		
4		
5		
6		
7		
8		

PERMIT TO PRACTICE
 WATT CONSULTING GROUP LTD
 SIGNATURE _____
 DATE _____
 PERMIT NUMBER: 1001432
 ENGINEERS & GEOSCIENTISTS
 BRITISH COLUMBIA

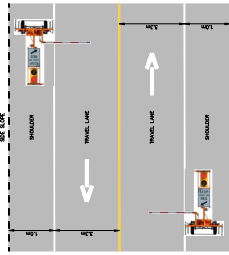


Looking WB on Keith Wilson Rd.
 Looking EB on Keith Wilson Rd.
 IMAGES DEPICT ACCESS POINT, TCP LOCATION AND ESCAPE ROUTE
 49°06'15.7"N 122°07'04.0"W

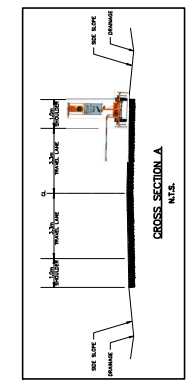


STORAGE NOT REQUIRED

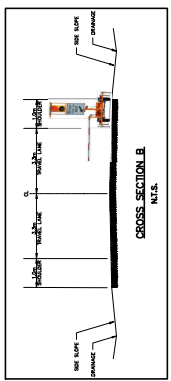
Expected hours of work
 - Chilliwack: 7 AM - 3 PM, Monday - Saturday, with the following exceptions:
 - Oversize deliveries that must take place at night
 - Narrow environmental / regulatory windows. A noise exemption permit will be Driveways within work zones
Driveways within the active work area (i.e. between AFADs) will have Type 1 barricades. These barricades will be controlled and maintained by a spotter and controlled manner.
Night work traffic control procedures (POMS) is required for night work operations on paved roads. The message displayed on the POMS will alert motorists to the work activities occurring ahead e.g., flagger operation.



NOTE: DIMENSIONS SHOWN ARE SITE SPECIFIC
 PLAN VIEW
 N.T.S.



NOTE: DIMENSIONS SHOWN ARE SITE SPECIFIC
 CROSS SECTION A
 N.T.S.



NOTE: DIMENSIONS SHOWN ARE SITE SPECIFIC
 CROSS SECTION B
 N.T.S.

- LEGEND:**
- SIGN MARKER
 - AUTOMATED FLAGGER ASSISTANCE DEVICE (AFAD)
 - TCP CONTROL LOCATION
 - ACCESS (6B-A-31-A)
 - WORK ZONE
 - DELINEATOR
 - TYPE 1 BARRICADE

TRAFFIC CONTROL LAYOUT
AP 6B-A-31-A-SLAT
BPLP TMEP SPREAD 6B

PROJECT NO: 3431.B01
 DRAWING NO: 6B-A-31-A-SLAT_P3
 DATE: JAN 17, 2023
 REVISION: 1

DESIGNED: GP
 DRAWN: GP
 CHECKED: GP
 APPROVED: KM

DESIGN SPEED: 60 km/h

DESIGN VEHICLE: 60 km/h

WATT Consulting Group
 Calgary, Edmonton, Lloydminster, Okanagan, Vancouver, Victoria
 WATTCONSULTINGGROUP.COM

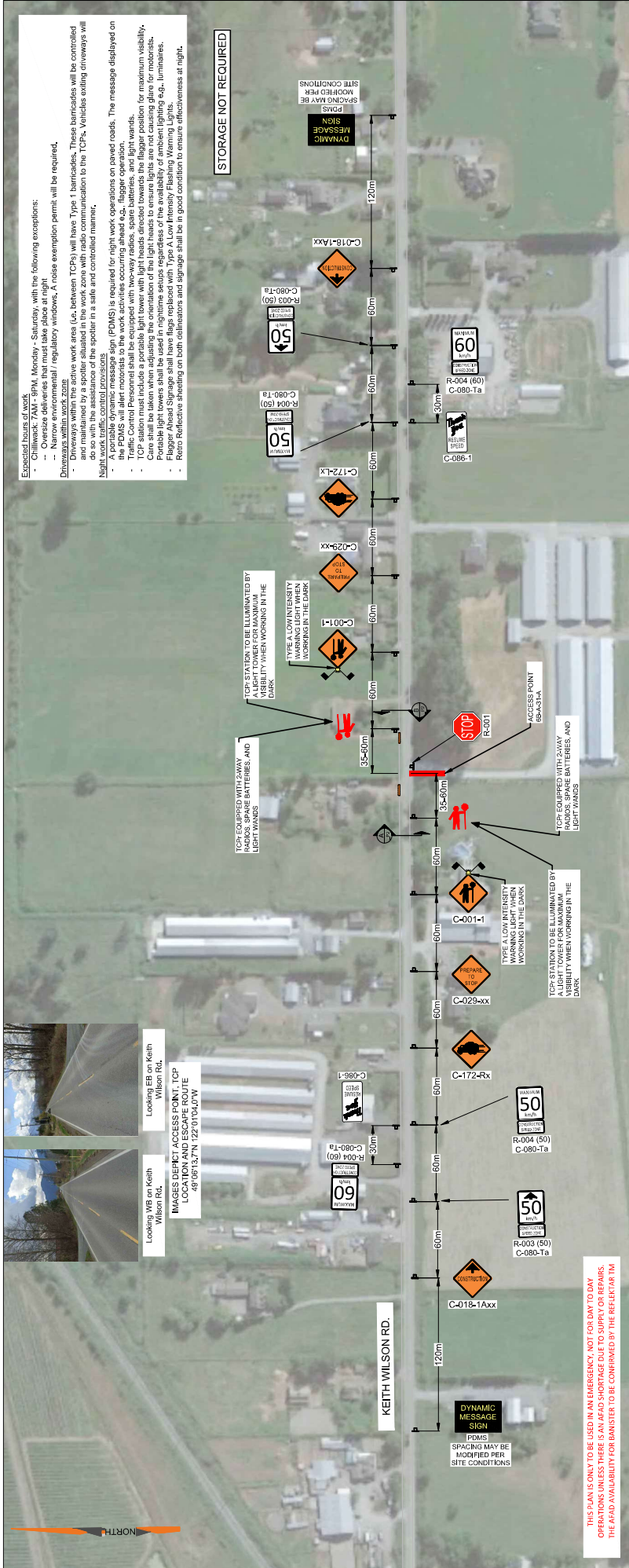
REVISIONS	ISSUED FOR IMPLEMENTATION	DATE
0	ISSUED FOR IMPLEMENTATION	JAN 17-23
1	ISSUED FOR IMPLEMENTATION	JAN 20-23
2		
3		
4		
5		
6		
7		
8		

SEAL:

PERMIT TO PRACTICE
 WATT CONSULTING GROUP LTD
 SIGNATURE _____
 DATE _____
 PERMIT NUMBER: 1001432
 ENGINEERS & GEOSCIENTISTS
 BRITISH COLUMBIA

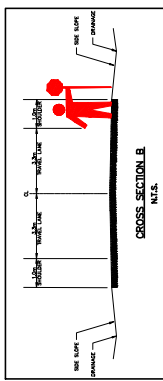
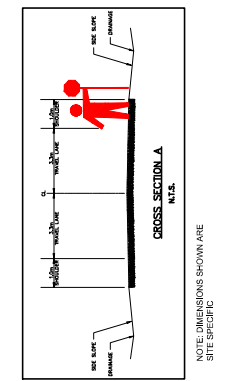
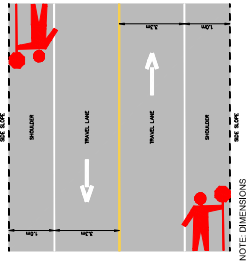
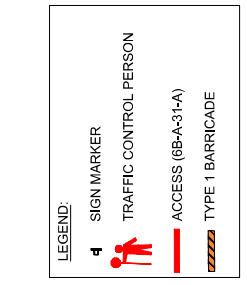


Looking EB on Keith
Wilton Rd.
Looking WB on Keith
Wilton Rd.
IMAGES DEPICT ACCESS POINT, TOP
LOCATION AND ESCAPE ROUTE
49°09'15.7" N 122°07'04.0" W



- Expected hours of work**
- Chilledack: 7AM - 9PM, Monday - Saturday, with the following exceptions:
 - Overseas deliveries that must take place at night
 - Regulatory incidents, A noise exemption permit will be required.
 - Driveways within work zone
 - Driveways within the active work area (i.e. between TCPs) will have Type 1 barricades. These barricades will be controlled and maintained by a spotter situated in the work zone with radio communication to the TCPs. Vehicles exiting driveways will appear in a safe and controlled manner.
 - Night work traffic control provisions
 - A portable dynamic message sign (PDMS) is required for night work operations on paved roads. The message displayed on the PDMS will alert motorists to the work activities occurring ahead e.g., flagger operation, lane closure, etc.
 - TCP stations must include a portable light tower with light heads directed towards the flagger position for maximum visibility. Care shall be taken when adjusting the orientation of the light heads to ensure lights are not causing glare for motorists. Portable light towers shall be used in nighttime setups regardless of the availability of ambient lighting e.g., luminaires, Pigeon Ahead Signage shall have flags replaced with Type A, Low Intensity Flashing Warning Lights
 - Pests Releasee signaling on both shoulders and signage shall be in good condition to ensure effectiveness at night.

STORAGE NOT REQUIRED



NOTE: DIMENSIONS SHOWN ARE SITE SPECIFIC

PERMIT TO PRACTICE		WATT CONSULTING GROUP LTD		SIGNATURE _____	
DATE		PERMIT NUMBER: 1001432		ENGINEERS & GEOSCIENTISTS	
		BRITISH COLUMBIA			
SEAL:		TITILE:		TRAFFIC CONTROL LAYOUT	
DESIGNED: DRAWN: CHECKED: APPROV:		0 ISSUED FOR IMPLEMENTATION		JAN 16 23	
GP GP GP GP		1 ISSUED FOR IMPLEMENTATION		JAN 17 23	
DESIGN SPEED: 60 km/h		2 ISSUED FOR IMPLEMENTATION		JAN 19 23	
PROJECT NO: 3431.B01		3 ISSUED FOR IMPLEMENTATION		JAN 24 23	
DATE: JAN 16, 2023		4			
REVISION:		5			
		6			
		7			
		8			

WATT
Consulting Group
Calgary, Edmonton, Lloydminster,
Okanagan, Vancouver, Victoria
WATTCONSULTINGGROUP.COM